

# Complete Crochet Butterfly - Tutorial

## Comprehensive Crochet Tutorial: Pink Laced-Wing Butterfly

### MATERIALS

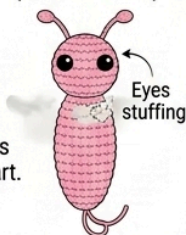
- **YARN:** 1 skein Pink (approx. 50g), Fine/Sport Weight (Gauge 2/3) (e.g., mercerized cotton)
- **HOOK:** E/4 (3.5mm) Crochet Hook (pink handle)
- **EYES:** Two 6mm Black Amigurumi Safety Eyes
- **STUFFING:** Polyester Fiberfill (approx. small handful)
- **TOOLS:** Yarn Needle, Scissors

### STITCH GLOSSARY (US TERMS)

- MC:** Magic Circle (Start with a ring)
- CH:** Chain (Foundation)
- SC:** Single Crochet (Tight stitch)
- DC:** Double Crochet (Taller stitch)
- HDC:** Half Double Crochet (Intermediate)
- SL ST:** Slip Stitch (Join)
- INC:** Increase (2 sc in one stitch)
- DEC:** Decrease (Invisible sc2tog)
- TR:** Treble Crochet (Very tall stitch, acenuabin, for wing tips)

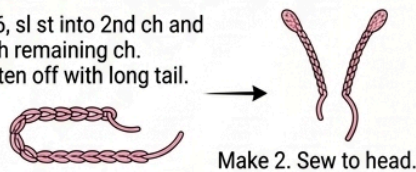
### STEP 1: CRAFT THE BODY (AMIGURUMI)

- Rnd 1: MC with 6 sc.
  - Rnd 2: (Inc) x6 (12).
  - Rnd 3: (Sc, inc) x6 (18).
  - Rnd 4-10: Sc around (18).
  - Rnd 11: (Sc, dec) x6 (12).
- Start stuffing and attach eyes between Rnd 4 & 5, 4 sts apart.  
 Rnd 12: Dec around (6).  
 Fasten off, weave tail.



### STEP 2: CREATE THE ANTENNAE

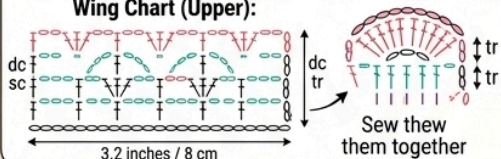
- Ch 6, sl st into 2nd ch and each remaining ch.
- Fasten off with long tail.



### STEP 3: CROCHET THE UPPER WINGS (2 SIZES)

- Ch 12 (Larger: Ch 15).
- Row 1: Sc in 2nd ch and across. Ch 1, turn.
- Row 2-4: Work lace pattern (3dc shell, ch 1, sk 2).
- Row 5: Sc border. (See wing chart).

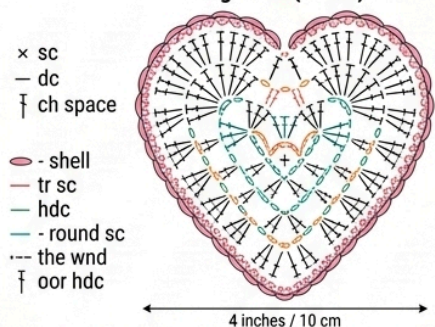
#### Wing Chart (Upper):



### STEP 4: CROCHET THE LOWER WINGS (1 SIZE)

- Ch 18 (for the large motif).
- Rnd 1: In ch loop: (2 dc, ch 3, 2 dc), sk 3, sc... (Follow Rnd 2-4 for the lace motif).
- Border with scalloped sc and hdc.

#### Wing Chart (Lower):

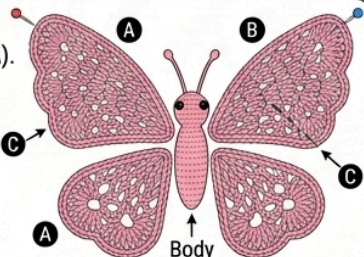


### STEP 4: CROCHET THE LOWER WINGS (1 SIZE)

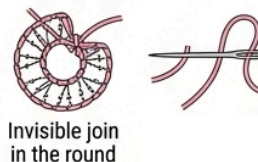
- Ch 18 (for the large motif).
- Rnd 1: In ch loop: (2 dc, ch 3, 2 dc), sk 3, sc... (Follow Rnd 2-4 for the lace motif).
- Border with scalloped sc and hdc.

### STEP 5: ASSEMBLY

- Lay lower wings motif flat (A).
- Pin upper wings (B) to lower wings (A) as shown.
- Use a running stitch to sew the butterfly body (C) over the wing joins. Flatten the bottom to stand.



### STEP 6: KEY METHOD: INVISIBLE JOIN & WEAVING TAILS



This detailed guide will teach you how to crochet a beautiful butterfly from start to finish. The project is beginner-friendly but includes a few decorative techniques that give the butterfly its delicate shape and texture. By carefully following each step, even beginners can complete this project successfully.

The butterfly is made in three main parts: the **body**, the **wings**, and the **assembly**. Take your time with each step and make sure your stitches stay consistent.

## **Materials & Specifications**

Before starting, gather all the necessary materials.

### **Yarn**

Use **Sport Weight (2) cotton yarn** in a soft color such as dusty pink. A small skein (around 50g) is more than enough for this project.

### **Hook**

Use a **2.5 mm crochet hook (C/2)**. This hook size helps create tight stitches so the butterfly body holds its shape.

### **Gauge**

Gauge is **not critical**, but aim for approximately **10 stitches per inch**. Slightly tight tension works best for amigurumi-style pieces.

### **Additional Supplies**

You will also need:

- 3 mm black safety eye
- Fiberfill stuffing
- Yarn needle
- Scissors

## **Stitch Abbreviations (US Terms)**

Understanding the abbreviations will make following the tutorial easier.

**Ch** – Chain

**Sc** – Single Crochet

**Hdc** – Half Double Crochet

**Dc** – Double Crochet

**Tr** – Treble Crochet

**Sl st** – Slip Stitch

**Inc** – Increase (2 stitches in the same stitch)

**Dec** – Decrease (invisible decrease recommended)

**Sk** – Skip stitch  
**MR** – Magic Ring

All instructions in this tutorial use **US crochet terminology**.

## **Crochet the Butterfly Body**

The butterfly body is worked in the round starting with a magic ring. This creates a small rounded amigurumi shape.

### **Step 1: Make a Magic Ring**

Start by creating a **magic ring (MR)**. This adjustable ring allows you to close the center tightly after working your stitches.

Wrap the yarn around your fingers to form a loop. Insert your hook into the loop, yarn over, and pull up a loop. This secures the ring and prepares it for the first stitches.

### **Step 2: First Round**

Chain **1**. This chain counts as your first stitch.

Now work **6 single crochet stitches (sc)** directly into the magic ring.

Pull the yarn tail to close the ring tightly so there is no hole in the center.

Join the round with a **slip stitch** to the first stitch.

You should now have **6 stitches total**.

### **Step 3: Increase Round**

Chain **1** to begin the round.

Work **2 single crochet stitches in each stitch around**. This is called an **increase**.

Repeat for all stitches.

When finished, join with a slip stitch.

You should now have **12 stitches total**.

### **Steps 4 to 7: Body Length**

For the next **four rounds**, the body will grow vertically without increasing.

At the start of each round:

Chain **1**, then work **1 single crochet in each stitch around**.

Join with a slip stitch at the end of each round.

After completing these rounds, your body should look like a small tube with **12 stitches around**.

### **Step 8: Begin Shaping the End**

Chain **1** to start the round.

Work the following pattern:

**1 single crochet, 1 decrease**

Repeat this pattern **four times around**.

Join with a slip stitch.

You should now have **8 stitches remaining**.

### **Step 9: Stuff the Body**

Before closing the body, lightly fill it with **fiberfill stuffing**.

Use just enough stuffing to give the body shape without stretching the stitches.

Insert the **3 mm safety eye** near the top front of the body. Make sure it is centered and secure.

### **Step 10: Close the Body**

Chain **1**.

Work **a decrease in every stitch around** to close the body.

Join with a slip stitch.

Cut the yarn, leaving a small tail, and use a **yarn needle** to close the remaining opening neatly.

Your butterfly body is now complete.

## **Crochet the Wings**

The butterfly wings are decorative and worked separately before attaching to the body. You will make **two identical wing pieces**.

## **Round 1: Start the Wing**

Begin with a **magic ring**.

Chain **4**. This chain counts as your **first treble crochet (tr)**.

Work **15 treble crochet stitches into the magic ring**.

Join with a slip stitch.

You should have **16 treble stitches total**.

This creates a wide circular base for the wings.

## **Round 2: Increase the Wing**

Chain **3** (counts as the first double crochet).

Work **1 double crochet in the same stitch**.

Now **increase in every treble stitch around** by working **2 double crochets in each stitch**.

Join with a slip stitch.

You should now have **32 double crochet stitches**.

## **Round 3: Create Openwork Loops**

This round forms decorative loops that shape the butterfly wings.

Work the following pattern:

Chain **5**,  
Skip **1 stitch**,  
Slip stitch into the next stitch.

Repeat this pattern around the circle.

When finished, you should have **16 chain-5 loops**.

## **Round 4: Expand the Loops**

Slip stitch into the **top of the first chain loop**.

Then work:

Chain **6**,  
Slip stitch into the top of the next loop.

Repeat this pattern around.

You will now have **16 larger chain-6 loops** that create the wing structure.

## **Round 5: Shell Edging**

This round forms decorative scallops on the wing edges.

Into each **chain-6 loop**, work:

**8 half double crochet stitches**

Between each loop, work **2 half double crochet stitches** to connect the shells.

Continue this pattern around the entire wing.

This gives the wings their classic butterfly shape.

## **Round 6: Define the Edge**

To finish the wings:

Chain **1**,  
Work **1 single crochet in the same stitch**.

Then crochet **single crochet stitches evenly around the entire edge** of the wing.

This creates a clean, stable border.

Fasten off and weave in the yarn end.

Repeat the entire wing pattern once more so you have **two wings**.



## **Assembling the Butterfly**

Now that all pieces are finished, it's time to assemble the butterfly.

Position the two wings behind the body so the larger curves form the top wings and the lower curves form the bottom wings.

Using a **yarn needle and matching yarn**, sew the wings securely to the back of the body. Stitch through the center area so the wings stay firmly attached.

Make small stitches so they are nearly invisible.

## **Creating the Antennae**

To add antennae:

Attach yarn to the top of the head.

Chain a short length (around **6–8 chains**).

Slip stitch back down the chain or leave it as a loop for a decorative effect.

Repeat on the other side.

You can also slightly curl the chains with your fingers to give them a natural look.

## **Finishing Touches**

Check that all yarn tails are woven in securely.

Shape the wings gently with your hands so they spread naturally.

If desired, lightly steam block the wings to help them hold their shape.

Your crocheted butterfly is now complete! 

This butterfly can be used for many creative projects such as:

- appliqués for blankets
- decorations for baby items
- garlands
- hair clips
- handmade gifts