

# Crochet Butterfly Bracelet - Tutorial

## CROCHET BUTTERFLY BRACELET TUTORIAL: From Start to Finish

### 1 MATERIALS & TOOLS

**Fios**  
100% Merc. Cotton,  
Size 10 Thread



**Cores**

Dark Olive  
Green



Cream/  
Natural



Light  
Purple



Dusty Pink



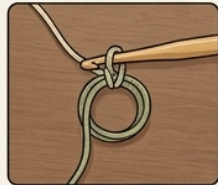
Deep  
Maroon



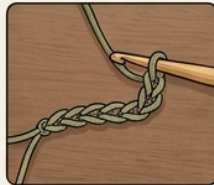
US Size 6 (1.80 mm)  
Crochet Hook

**Finished Circumference:**  
Approx. 7 inches (adjustable)  
**Butterfly size:**  
Approx. 1 inch width

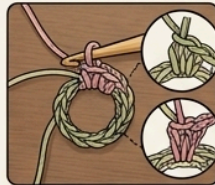
### 2 STEP-BY-STEP BUTTERFLY GUIDE



**START: Magic Ring**



**Step 2: Foundation  
(Chain 4)**



**Step 3: First Petal cluster**  
(detailed view of 2 ring and 2  
treble crochets in ring, etc.)



**Step 4: Second Petal  
cluster**



**Step 5: Joining petals**



**Step 6: Center Body**  
(Single crochet and Slip  
Stitch around the ring, add  
adding small beads for eyes)

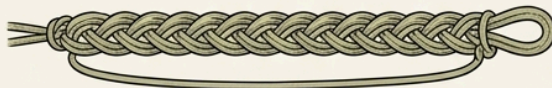


**Step 7: Antennae**  
(Chain 6 and slip stitch back)



**Step 8: Finishing the  
butterfly**

### 3 BRACELET BAND & ASSEMBLY



#### 1. Create Band



How specific Simple Stitch  
(e.g., Tunisian Simple Stitch  
or a specific cord pattern).

#### 2. Center Butterfly



Attaching the butterfly to  
the band center.

#### 3. Adjustable Clasp



Make now-and-loop  
button-and-loop sliding knot  
or a sliding knot.

#### KEY TO US CROCHET TERMINOLOGY & STITCHES

- CH - Chain Stitch
- SC - Single Crochet
- ⤴ HDC - Half Double Crochet
- ⤵ DC - Double Crochet
- ⤶ TR - Treble Crochet
- SS - Slip Stitch
- ⊙ MR - Magic Ring
- ⤴ DEC - Decrease
- ▲ INC - Increase
- ⊞ Cord Stitch (CS) detailed steps

This beautiful crochet butterfly bracelet is a delicate and elegant handmade accessory that combines a floral-style butterfly motif with a soft adjustable bracelet band. It is made using mercerized cotton thread and a fine crochet hook, making it lightweight, detailed, and perfect for everyday wear or as a handmade gift.

This tutorial follows the structure shown in the graphic and explains every step carefully so that beginners and experienced crocheters alike can complete the project successfully.

## **Materials and Tools**

Before starting, prepare all your materials.

### **Thread**

Use:

100% Mercerized Cotton  
Size 10 Crochet Thread

This type of thread gives the bracelet a smooth finish, strong structure, and delicate appearance.

### **Recommended Colors**

You can follow the original palette or choose your own.

Suggested colors:

Dark Olive Green – for the base ring and butterfly body  
Cream / Natural – for bracelet band details  
Light Purple – optional accent color  
Dusty Pink – for butterfly wings  
Deep Maroon – for decorative contrast

The main butterfly in this tutorial uses Dusty Pink for the wings and Dark Olive Green for the center/body.

# DETAILED CROCHET PATTERN & STITCH DIAGRAMS FOR BUTTERFLY BRACELET

## 1 PATTERN MATERIALS & TOOLS (Updated details)

### YARN:

100% Merc. Cotton,  
Size 10 Thread



Linha de  
Algodão  
(Yarn)



Tamanho  
10 (Size 10)



Light  
Purple



Dusty Pink



Deep  
Maroon



### HOOK:



US Size 6 (1.80 mm)

(Measures):

**Finished circumference:**  
~7 inches (17.8 cm);

**Butterfly Width:**  
~1 inch (2.5 cm)

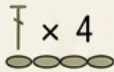
## 2 PART 1: BUTTERFLY STITCH DIAGRAM & WRITTEN GUIDE

### Passo-a-Passo (Step-by-Step) Guide

#### 1. Magic Ring (MR).



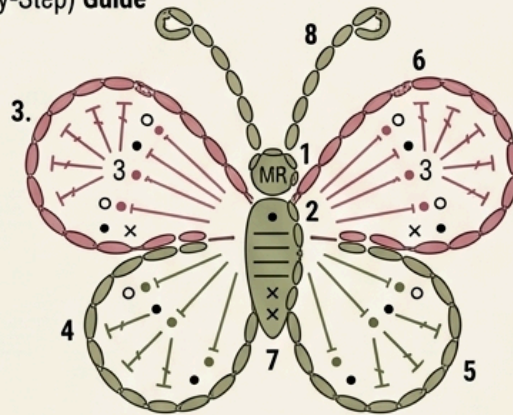
#### 2. Foundation: Ch 4.



#### 3. Right Upper Wing: [2 TR, Ch 3, sl st] in ring.



#### 4. Right Lower Wing: [Ch 2, 3 DC, Ch 2, sl st] in ring.



#### 5. Left Lower Wing: [Ch 2, 3 DC, Ch 2, sl st] in ring.



Light Maroon

#### 7. Close Ring & Body: Tighten MR. Join with sl st. 1 SC in ring.

#### 6. Left Upper Wing: [Ch 3, 3 TR, Ch 3, sl st] in ring.

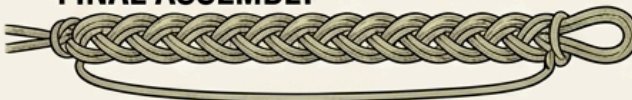


#### 7. Close Ring & Body: Tighten MR. Join with sl st. 1 SC in ring.



#### 8. Antennae: Ch 6, sl st back. Repeat. Join.

## 3 PART 2: BRACELET BAND PATTERN & FINAL ASSEMBLY



#### 1. Band Foundation (Braided Look)



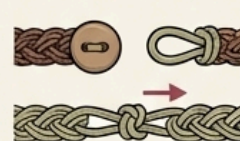
Pattern for the braided  
strap. Creates adjustable  
loop.

#### 2. Butterfly Placement



Attach butterfly to  
center of band.

#### 3. Clasp Mechanics



Create secure adjustable  
closure.

### KEY TO US CROCHET TERMINOLOGY & STITCHES

- CH - Chain Stitch
- SC - Single Crochet
- ⌋ HDC - Half Double Crochet
- ⌋ DC - Double Crochet
- ⌋ TR - Treble Crochet
- SS - Slip Stitch
- ⊙ MR - Magic Ring
- ⌋ DEC - Decrease
- ▲ INC - Increase
- ⌋ Cord Stitch (CS) - detailed steps

## **Crochet Hook**

Recommended size:

US Size 6 Crochet Hook  
1.80 mm Hook

This smaller hook helps create tight, neat stitches for the detailed butterfly shape.

## **Finished Size**

Bracelet circumference:

Approximately 7 inches  
(adjustable)

Butterfly size:

Approximately 1 inch wide

This can vary slightly depending on your tension.

## **US Crochet Abbreviations Used**

Here is the stitch guide used throughout the tutorial.

CH = Chain

SC = Single Crochet

HDC = Half Double Crochet

DC = Double Crochet

TR = Treble Crochet

SS = Slip Stitch

MR = Magic Ring

DEC = Decrease

INC = Increase

Now let's begin the butterfly.

## **Step 1: Start with the Magic Ring**

The butterfly begins with a Magic Ring.

Hold the yarn tail in your hand and wrap the yarn around two fingers to create a loop. Insert your hook into the loop, yarn over, and pull through.

Chain 1 to secure the ring.

Do not tighten it yet.

The Magic Ring creates the center base of the butterfly and allows you to close the center tightly later for a neat finish.

This step is important because it prevents a hole from forming in the middle of the butterfly.

Leave the tail slightly long because you may use it later for sewing and tightening.

## **Step 2: Foundation Chain (Chain 4)**

After securing the Magic Ring:

Chain 4

Count carefully and keep the chains even—not too tight and not too loose.

These chains help establish the foundation structure that supports the first petal cluster.

The chain should sit comfortably around the ring without pulling too tightly.

If your tension is too tight, the petals may curl too much.

If too loose, the butterfly may lose shape.

Try to keep your stitches consistent.

## Step 3: First Petal Cluster

Now we begin forming the first wing section of the butterfly.

Into the Magic Ring, work:

2 Treble Crochets (2 TR)

To make a Treble Crochet:

Yarn over twice

Insert hook into ring

Yarn over and pull through

Yarn over, pull through 2 loops

Yarn over, pull through 2 loops

Yarn over, pull through final 2 loops

Treble crochet creates the height needed for the wing petals.

After the 2 TR, add:

2 Double Crochets (2 DC)

Then:

2 Half Double Crochets (2 HDC)

Then:

2 Single Crochets (2 SC)

This creates a gradual petal shape with beautiful rounded edges.

The graphic shows the petal cluster in detail, so keep your stitches grouped closely together.

This forms the first side of one wing.

## Step 4: Second Petal Cluster

Now create the second wing petal beside the first one.

Repeat the same process into the ring:

2 SC  
2 HDC  
2 DC  
2 TR

This mirrored structure helps create symmetry.

You should now see two rounded petals forming the upper wings.

Keep all stitches close together but not crowded.

After finishing, chain 2 lightly to separate the next section.

This helps define the wing shape.

## Step 5: Joining the Petals

Now continue creating the remaining lower wings using the same petal method.

Repeat the petal structure two more times so you have a total of four rounded wing sections.

The butterfly should now resemble a small flower with four petals.

To join:

Slip stitch into the first stitch of the round

This closes the shape and secures the wings together.

Gently pull the Magic Ring tail to tighten the center.

Do this slowly so the stitches stay even.

Do not pull too aggressively.

Weave the tail temporarily to hold everything in place.

At this point, your butterfly wings should look soft, rounded, and balanced.

## **Step 6: Center Body**

Now we create the butterfly's center body.

Switch to Dark Olive Green thread if you used pink for the wings.

Attach the new yarn around the center ring.

Work:

Single Crochet around the center

Continue wrapping SC stitches around the middle area to form the body.

Then use:

Slip Stitch

to secure and shape the center.

This creates the vertical body section between the wings.

You may also add:

Small beads for eyes

if you want extra decorative detail.

If adding beads, sew them carefully near the upper body section.

Keep the body slightly firm so the butterfly keeps its shape when attached to the bracelet.

## **Step 7: Make the Antennae**

The antennae are simple and elegant.

Attach yarn at the top of the body.

Chain 6

Slip stitch back down along the chain path to secure it.

Repeat on the other side.

You now have two small curved antennae.

Do not make them too stiff.

A slight curve gives the butterfly a more natural appearance.

Trim excess yarn and weave in ends carefully.

Your butterfly motif is now complete.

## **Step 8: Finishing the Butterfly**

Take a moment to shape the butterfly gently with your fingers.

Adjust the petals so they sit evenly.

Flatten the center if needed.

You can lightly steam block the butterfly if desired, but be careful with delicate thread.

Do not apply direct heat.

Now set the butterfly aside while we create the bracelet band.

## **Step 9: Bracelet Band – Create the Base Band**

Using Cream, Natural, or Olive Green thread:

Create a foundation chain long enough to fit around the wrist.

Usually:

Approximately 35–45 chains

depending on wrist size and desired fit.

The bracelet shown uses a braided cord-style band.

You may use:

Simple chain cord

Tunisian simple stitch look

Braided crochet cord

Cord Stitch (CS)

If using a braided look:

Work slip stitches back across the chain for a stronger, thicker bracelet texture.

This creates a beautiful woven appearance.

Keep checking the fit around the wrist.

Remember to leave room for the clasp.

The band should feel comfortable, not tight.

## **Step 10: Center the Butterfly**

Once the bracelet band is finished:

Find the exact center of the band.

Place the butterfly motif in the middle.

Using a yarn needle and matching thread:

Sew the butterfly securely to the center

Pass the thread through the body section—not the wings—so the wings remain slightly raised and dimensional.

Sew firmly enough that it will not move during wear.

Hide the knots neatly underneath.

The butterfly should sit centered and balanced.

## **Step 11: Adjustable Clasp**

Now create the adjustable bracelet closure.

There are two common options shown in the tutorial:

### **Button and Loop Closure**

Create a small loop on one side using:

Chain stitches + Slip Stitch

Sew a small decorative button on the opposite end.

Test the fit to make sure the button slides easily through the loop.

### **Sliding Knot Closure**

This is the adjustable version shown in the graphic.

Create:

Loop + Knot system

Make a small loop at one end and use a sliding knot for flexibility.

This allows the bracelet to fit multiple wrist sizes and gives a professional finish.

Make sure the clasp opens and closes smoothly.

Trim excess thread neatly.

## **Final Finishing**

Weave in all loose ends using a yarn needle.

Check the butterfly attachment.

Check clasp security.

Test the bracelet by wearing it.

Make sure the wings lie nicely and the bracelet feels comfortable.

If needed, adjust the clasp or reshape the butterfly.

Your Crochet Butterfly Bracelet is now finished 🦋